

## PK86X-PF Flow-Through UHP PFA Pressure Sensor

### Application Scenarios



Semiconductor  
/Photovoltaic



Cleaning/Wet  
Process Equipment



Corrosive  
Medium



Chemical Blending  
System



### Product Features

#### Reliable

High-purity PFA one-piece molded structure for enhanced safety and reliability.

#### Design

The through-flow wetted chamber features a straight-through design, eliminating dead zones.

#### Acid/Alkali Resistant

The sensor is ceramic, and a sapphire version is available for HF/HCl applications.

#### Connection

Various connection options in high-purity PFA material are available.



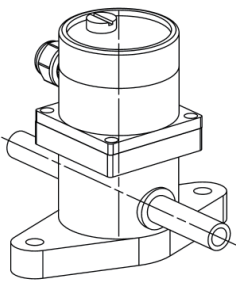
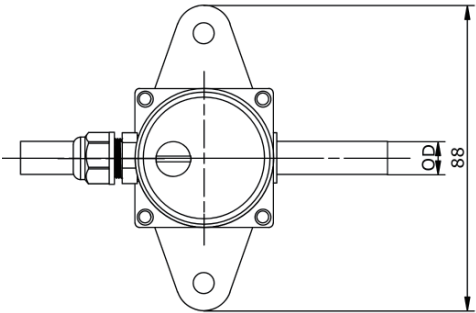
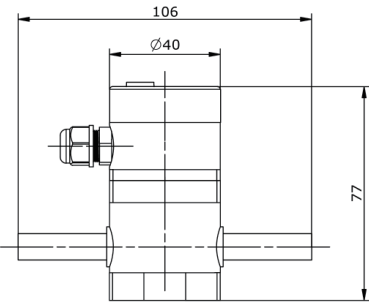
### Product Description

- This product features a high-purity, one-piece molded PFA structure with high reliability, suitable for both positive and negative pressure applications. The straight-through flow path design effectively eliminates dead zones, ensuring long-term stability.
- The pressure range covers -14.7 to 145 psi, with customizable ranges available to meet specific customer requirements.
- Each unit undergoes 100% testing and temperature compensation, ensuring highly stable and reliable performance.
- The sensor element is ceramic, offering excellent compatibility with acid/alkali media and ultrapure water. For special media such as HF / HCl, a sapphire sensor option is available, providing superior resistance to strong acids and significantly extending product lifetime.

Technical Specifications

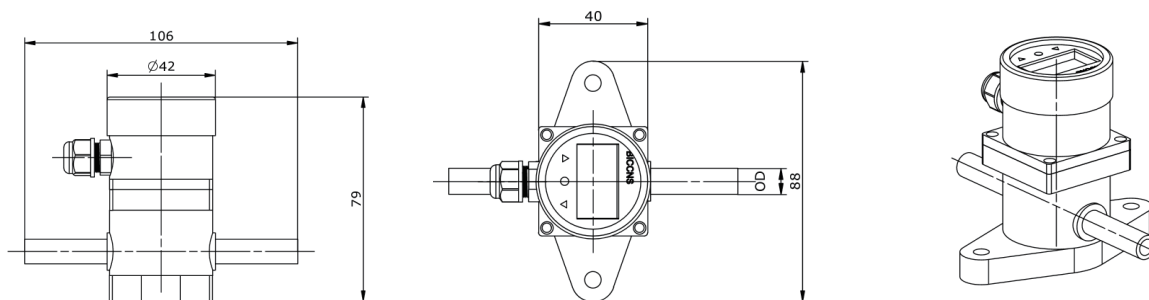
Application Scenarios	Gauge, Negative Liquid Pressure Measurement
Measurement Range	-14.7.....0.....145psi
Accuracy (@25℃)	±1%FS
Temp Coefficient	±0.1%FS/℃
Sensor Material	Ceramic/Sapphire
Over pressure	Max: the rated pressure × 3
Medium Temperature	0.....80℃
Ambient Temperature	-10.....65℃
Compensation Range	0.....40℃
Supply Voltage	DC24V (10...30 V DC)
Output Signal	4...20mA, Display version: 4...20mA+PNP/NPN*
Connection Material	PFA
Diaphragm Material	PFA
Stability Performance	Typical: ±1%FS/Year
Process Connection	Tube, Flared, Pillar etc.
Protection Level	IP55

Specifications and Dimensions (Unit: mm)



Flow-through

Dimensions are for reference only. Actual product dimensions may vary.



Display Flow-through

## Selection Specifications

Output		Range		Type		Connection		Connection Size		Application (Optional)	
420P	4-20mA+PNP*2+Display	PU	50psi	G	Gauge	T	Tube	1	1/4"	SS	HF/ HCI
420N	4-20mA+NPN*2+Display	PT	75psi	M	Negative	F	Flared	2	3/8"		
1	4-20mA	PS	100psi			P	Pillar	3	1/2"		
		PO	145psi			Y	Others	4	3/4"		
		YY	Customized					9	Others		
10		20		30		40		50		60	

## PK86X-PF Flow-Through UHP PFA Pressure Sensor

### Selection Example:

Requirement: 4-20mA Output, 0~100psi and 1/2"Tube

Selected Model: PK86X-PF1PSGT3

Range Code Table			
Code	Range	Code	Range
G100K	(0~0.1) MPa	BG100K	(-0.1~0.1) MPa
G200K	(0~0.2) MPa	BG200K	(-0.1~0.2) MPa
G300K	(0~0.3) MPa	BG300K	(-0.1~0.3) MPa
G500K	(0~0.5) MPa	BG500K	(-0.1~0.5) MPa
G700K	(0~0.7) MPa	BG700K	(-0.1~0.7) MPa
G1M	(0~1) MPa	BG1M	(-0.1~1) MPa

# PK40X-PF UHP PFA Pressure Sensor

## Application Scenarios



Semiconductor  
/Photovoltaic



Cleaning/Wet  
Process Equipment



Corrosive  
Medium



Chemical Blending  
System



## Product Features

Reliable	Range	Acid/Alkali Resistant	Connection
High-purity PFA one-piece molded structure for enhanced safety and reliability.	Capable of wide-range measurement: -14.7 to 145 psi	The sensor is ceramic, and a sapphire version is available for HF/HCl applications.	Various connection options in high-purity PFA material are available.

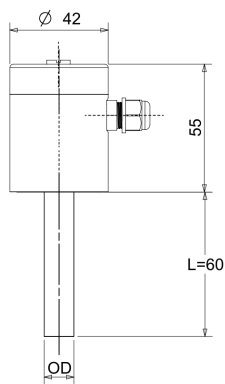
## Product Description

- This product features a high-purity, one-piece molded PFA structure with selectable connector options, fully suitable for applications in semiconductor, photovoltaic, flat-panel display, highly corrosive acid/alkali environments, and specialty liquid pipelines.
- The pressure range covers -14.7 to 145 psi, with customizable ranges available to meet specific customer requirements.
- Each unit undergoes 100% testing and temperature compensation, ensuring highly stable and reliable performance.
- The sensor element is ceramic, offering excellent compatibility with acid/alkali media and ultrapure water. For special media such as HF / HCl, a sapphire sensor option is available, providing superior resistance to strong acids and significantly extending product lifetime.

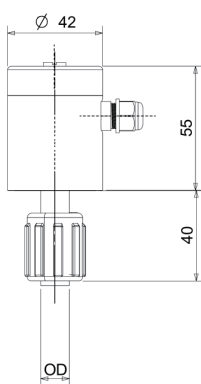
Technical Specifications

Application Scenarios	Gauge, Negative Liquid Pressure Measurement
Measurement Range	-14.7.....0.....145psi
Accuracy (@25℃)	±1%FS
Temp Coefficient	±0.1%FS/℃
Sensor Material	Ceramic/Sapphire
Over pressure	Max: the rated pressure × 3
Medium Temperature	0.....80℃
Ambient Temperature	-10.....65℃
Compensation Range	0.....40℃
Supply Voltage	DC24V (10...30 V DC)
Output Signal	4...20mA, Display version: 4...20mA+PNP/NPN*
Connection Material	PFA
Diaphragm Material	PFA
Stability Performance	Typical: ±1%FS/Year
Process Connection	Tube, Flared, Pillar etc.
Protection Level	IP55

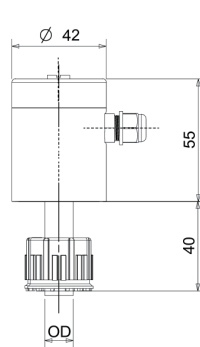
Specifications and Dimensions (Unit: mm)



Tube

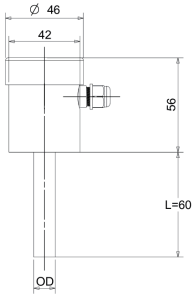


Flared

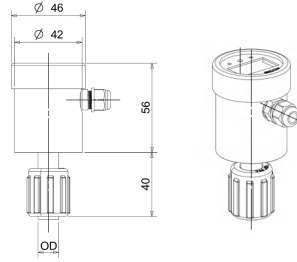


Pillar

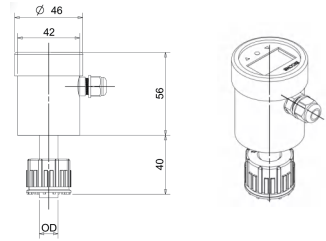
Dimensions are for reference only. Actual product dimensions may vary.



Display+Tube



Display+Flared



Display+Pillar

## Selection Specifications

Output		Range		Type		Connection		Connection Size		Application (Optional)	
420P	4-20mA+PNP*2+Display	PU	50psi	G	Gauge	T	Tube	1	1/4"	SS	HF/ HCI
420N	4-20mA+NPN*2+Display	PT	75psi	M	Negative	F	Flared	2	3/8"		
1	4-20mA	PS	100psi			P	Pillar	3	1/2"		
		PO	145psi			Y	Others	4	3/4"		
		YY	Customized					9	Others		
10		20		30		40		50		60	

### PK40X-PF UHP PFA Pressure Sensor

#### Selection Example:

Requirement: 4-20mA Output, 0~100psi and 1/2"Tube

Selected Model: PK40X-PF1PSGT3

Range Code Table			
Code	Range	Code	Range
G100K	(0~0.1) MPa	BG100K	(-0.1~0.1) MPa
G200K	(0~0.2) MPa	BG200K	(-0.1~0.2) MPa
G300K	(0~0.3) MPa	BG300K	(-0.1~0.3) MPa
G500K	(0~0.5) MPa	BG500K	(-0.1~0.5) MPa
G700K	(0~0.7) MPa	BG700K	(-0.1~0.7) MPa
G1M	(0~1) MPa	BG1M	(-0.1~1) MPa

## HPG60 60 mm UHP PFA Pressure Gauge

### Application Scenarios



Semiconductor  
/Photovoltaic



Cleaning/Wet  
Process Equipment



Corrosive  
Medium



Chemical Blending  
System



### Product Features

#### Reliable

Integrated high-purity PFA structure, suitable for high-concentration acidic and alkaline media, ensuring safety and reliability.

#### Test

Nitrogen (N<sub>2</sub>)  
Leak Test

#### Packaging

Vacuum Packag-  
ing in a Class  
100 Cleanroom

#### Protection

The housing is  
made of PP resin,  
providing  
enhanced

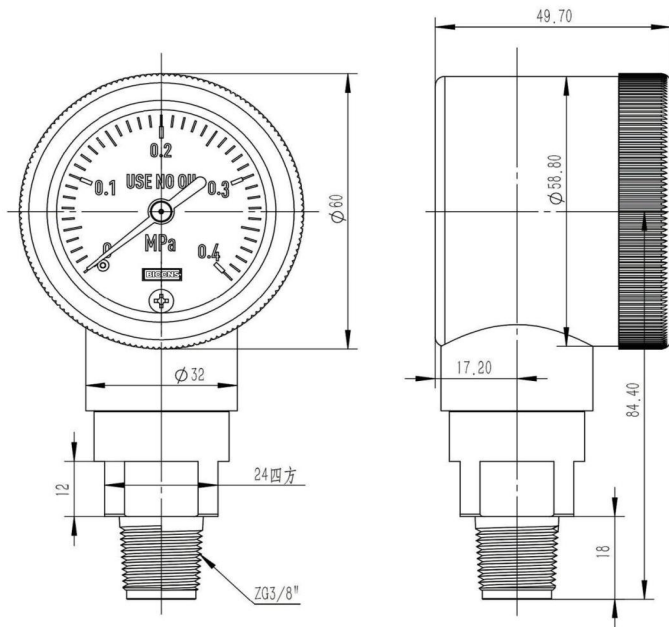
### Product Description

- This product is a pressure gauge that achieves exceptional chemical resistance and anti-adhesion performance by using PFA for all fluid-contacting components.
- The housing is made of PP resin, providing enhanced protection in environments where atmospheric corrosion must be considered.
- The product is manufactured entirely in a Class-100 cleanroom, vacuum-packaged, and 100% cleaned to meet SEMI standards.

Technical Specifications

Housing Dimensions		60mm
Elastic Element		Diaphragm Capsule Type
Window Material		PET Resin
Housing Material		PP Resin
Pressure Connection		G3/8 Male, R3/8 Male, 1/4" Tube, 3/8" Tube, 1/2" Tube, R1/4+M5
Connection Material		PFA, PTFE
Diaphragm Material		PFA
Pressure Range		0~0.2, 0.4, 0.6, 1MPa
Operating Temperature		10~30℃
Measurement Accuracy		1.5% FS at 23℃, for pressure above 0.6 MPa 2.5% FS at 23℃, for pressure at or below 0.4 MPa
Weight		About 200g
Process	Assembly and Adjustment	In Clean Room (Class 100)
	Process	Oil-Free and Water-Free
	Packaging	After purging with ultra-high-purity nitrogen (N <sub>2</sub> ), packaged in a clean polyethylene vacuum bag

Specifications and Dimensions (Unit: mm)





Mounting directions		Pressure Range		Connector Material		Pressure Connection		Customized
L	Radial	G10M	0~1MPa	PF	PFA	G38	G3/8 Male Thread	
B	Axial	G06M	0~0.6MPa	PT	PTFE	R38	R3/8 Male Thread	
		G04M	0~0.4MPa			T14	1/4" Tube	
		G02M	0~0.2MPa			T38	3/8" Tube	
						T12	1/2" Tube	
						R14M5	R1/4+M5	YY
10		20		30		40		50

---

HPG60-60mm UHP PFA Pressure Gauge

#### Selection Example:

Requirement: UHP PFA Pressure Gauge, Dial 60mm, Axial, 0~0.4MPa, Connector Material:PFA, R1/4+M5

Selected Model: HPG60-BG04MPFR14M5